

---

# 2025 Q2 Impact Report

APRIL, MAY, JUNE 2025

---



*Waste Less, Feed More.*





**761,612**  
TOTAL POUNDS  
OF FOOD DISTRIBUTED



**190** **FOOD DONORS**  
18 of which were first-time food donors!  
*partners that donated food*

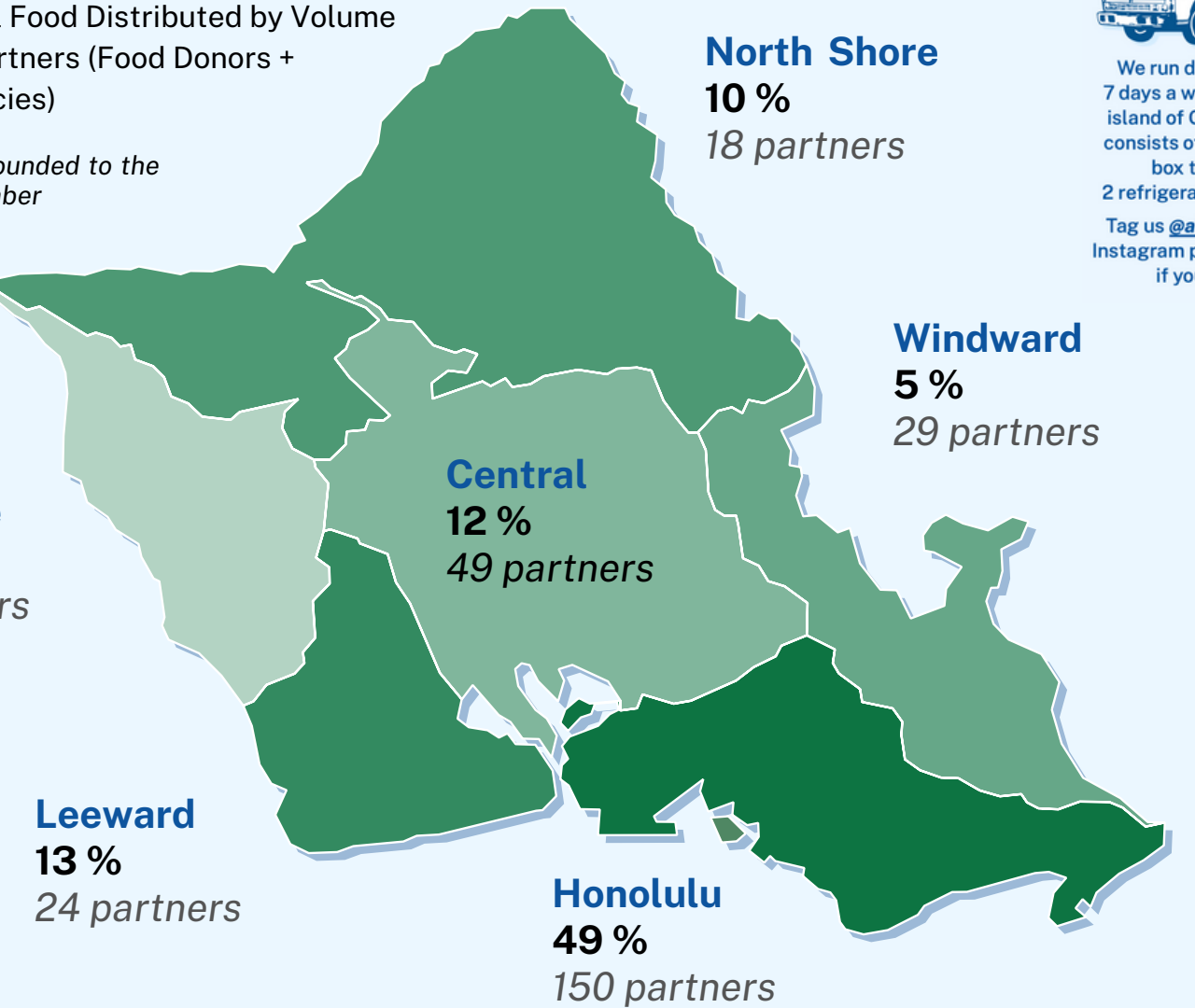
**102** **RECIPIENT AGENCIES**  
7 of which were first-time recipient agencies!  
*partners that received food*

## Distribution Across O'ahu by Region

Percent of Total Food Distributed by Volume & Number of Partners (Food Donors + Recipient Agencies)

*Percentages are rounded to the nearest whole number*

**Wai'anae**  
11 %  
15 partners



We run delivery routes 7 days a week all over the island of O'ahu. Our fleet consists of 3 refrigerated box trucks and 2 refrigerated cargo vans. Tag us [@alohaharvest](#) on Instagram posts and stories if you spot us!

## Pounds of Food Distributed by Category

Total Amount Rescued: 754,972 lbs.

Total Amount Purchased: 6,640 lbs.

**Rescued** refers to food that would otherwise go to waste.

**Donated** refers to food that the donor could have potentially sold for profit and wouldn't necessarily go to waste.

**Purchased** food from this quarter includes food purchased from funding for specific programs.



From April through  
June 2025,



*Mahalo nui loa to our volunteers for donating your time and supporting our small non-profit team. You help us make an exponentially greater impact on the community. We really can't do it without you all!*

**130**  
VOLUNTEERS

donated

**451**  
HOURS

of their time through

**118**  
OPPORTUNITIES

and helped divert

**18,518**  
POUNDS OF  
RESCUED FOOD

from going to waste and  
instead to feeding our  
community!

**\$15,099**  
VALUE OF  
TOTAL 2025 Q2  
VOLUNTEER  
HOURS\*

\*at \$33.48 per volunteer hour  
according to the organization  
Independent Sector's [Value of  
Volunteer Time Methodology](#)

### FOOD RESCUE VOLUNTEER DRIVERS NEEDED



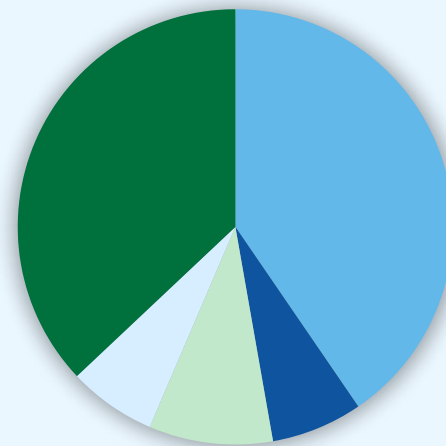
[Browse/Sign Up to Be Notified of Opportunities](#)

We have recurring and frequent needs for volunteers to help rescue excess food from special events like film sets, weddings, lū'aus, and bakeries.

No account is needed to browse our opportunities in our volunteer portal. With an account, you can subscribe to certain opportunity types that you'd like to be notified of when new availabilities come up by clicking the "Become a Fan" button, track your hours & mileage, and see the value of your impact!

If you want to learn more, please contact us at  
[info@alohaharvest.org](mailto:info@alohaharvest.org)

### % Pounds Rescued by Volunteer Program



- 40% Community Harvest
- 7% KCC Farmers' Market
- 9% Mililani Farmers' Market
- 7% Kaka'ako Farmers' Market
- 37% On-call Food Rescue





## **More Than a Meal: Surfing The Nations Spreads Aloha Through Food**

Since 2007, Aloha Harvest has delivered over 715,000 pounds of food to Surfing The Nations (STN), supporting their Feeding the Hungry program — STN’s longest-running outreach. What began in 1998 with food boxes delivered to seven families in Kalihi has now grown to serve hundreds of families each week. Thanks to community partnerships and steady food support, STN is now headquartered in Wahiawā, where their food pantry remains open three days a week.

Aloha Harvest’s weekly deliveries, which often include fresh bentos, sandwiches, and ready-to-eat meals, help STN reach over 200 families in Central O’ahu. “Aloha Harvest has been an outstanding partner,” says April Brown of the STN Outreach Program. “More than just food, this partnership represents connection — building bridges, restoring dignity, and serving others with joy and aloha.”

Through this shared mission, Aloha Harvest and STN continue to nourish individuals and families experiencing hardship — caring not just for their physical needs, but also for their sense of belonging and worth. “Aloha Harvest cares with us and makes it possible for us to love and walk out our mission of caring for those in need with food, love, and acceptance,” says Brown.



Photo Credits: Erika Linnea





## Popeyes Louisiana Kitchen: From Kitchen to Community

**POPEYES**  
LOUISIANA KITCHEN

**POPEYES**  
FOUNDATION

For over a decade, Popeyes Louisiana Kitchen has been serving up more than just crispy chicken — they’ve been feeding the community through their partnership with Aloha Harvest. Since 2010, five Popeyes locations across O’ahu have donated a total of 86,512 pounds of food, helping to fight hunger and reduce food waste in Hawai’i.

“At Popeyes Hawai’i, we’re all about serving good food,” says Sean Uezu, President of Popeyes Hawai’i. “And if we have extra, why not make sure it goes to people who need it? It’s a simple way to give back to the community that supports us every day.”

And while we all love that chicken from Popeyes, we also love their commitment to feeding families and caring for our community. Aloha Harvest is honored to be a recipient of the 2025 Food Love Grant from The Popeyes Foundation, whose mission is to strengthen communities with food and support in times of need. This grant will further fuel our efforts to rescue surplus food and deliver it to those experiencing food insecurity on O’ahu. Mahalo to the Popeyes ‘ohana for continuously nourishing and supporting our communities.



## Fueling Walkers with Aloha and Breakfast at the 46<sup>th</sup> Annual Visitor Industry Charity Walk

On Saturday, May 3, Aloha Harvest joined the Hawai'i Lodging and Tourism Association (HLTA) and the Hawai'i Hotel Industry Foundation (HHIF) at Ala Moana Beach Park for the 46th Annual Hawai'i Visitor Industry Charity Walk. Bright and early, our staff and volunteers were out in full force serving breakfast to all walkers and volunteers, helping kick off the morning with nourishment and community spirit.

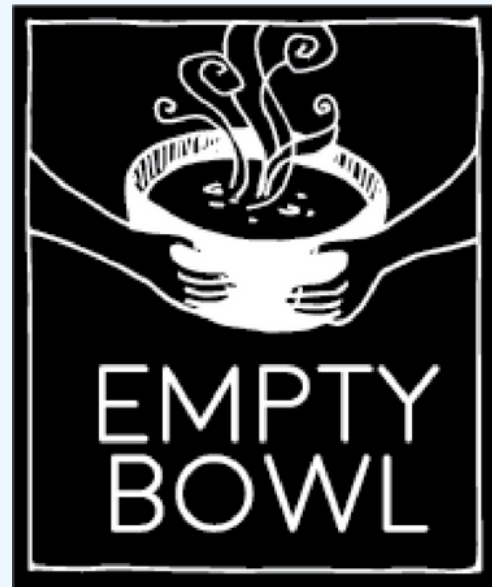
This year's walk introduced the Laulima Loop, an ADA-friendly route designed for kūpuna, individuals with disabilities, and those seeking a lighter pace — expanding accessibility and inclusivity at this beloved community event.

“Over the years, we have been steadfast in our goal — to provide support to more than one hundred charities, nonprofits, and other various organizations that count on this event to help them achieve their missions. All money raised is distributed across the island to organizations dealing with homelessness, youth, social welfare, mental and physical health, and our environment amongst a myriad of other issues. This year's walk promises to be filled with good fun, good food, and good entertainment... all for an amazing cause!”  
— Simeon Miranda, General Manager, Embassy Suites by Hilton O'ahu Waikīkī Beach Walk, and O'ahu Charity Walk Chair

We're honored to take part in an event that brings together the community in such a powerful, purpose-driven way. Aloha Harvest sends a heartfelt mahalo to our incredible volunteers and generous food donors — D. Otani Produce, Hawaii Candy Factory, ITO EN, Pepsi, as well as Y. Fukunaga Products for sharing their space with us to pack the breakfast bags. Your support truly fuels our mission and the walkers' journey!







Empty Bowl Hawai'i is a fun event where local artists, chefs, and community members come together to fight hunger. Presented by the Hawai'i Potters Guild, guests select a handmade bowl and enjoy a delicious meal. Proceeds from the event benefit a collaborative initiative, #FeedPeopleHI Chef Hui, between Aloha Harvest and Chef Hui.

This partnership was formed in a crisis response to the pandemic to utilize unemployed chefs to create meals out of rescued foods and bulk donations. Today, this initiative will continue our work in strengthening local food systems through education, sustainable farming, and community-driven programs.

Join us on Saturday, September 27, 2025, from 6–9 p.m. at the Hawai'i Convention Center for an evening of art, 'ono food, and collective impact. To purchase tickets or learn more, visit [emptybowlhawaii.org](https://emptybowlhawaii.org).



Be part of the new way to  
*nourish* and *strengthen* the community.

We're inviting passionate community members to be part of Harvesting Aloha Cohort I — a learning journey designed to deepen your understanding of food systems in Hawai'i and equip you with tools to take meaningful action. From August 9 to December 13, cohort members will meet virtually once a month to:

- Learn donor organizing and fundraising fundamentals
- Explore food insecurity and food waste in Hawai'i
- Work with the Aloha Harvest team & build leadership and advocacy skills
- Fundraise together to support local impact

This experience is for those ready to show up with an open heart, engage in reflective conversations, and grow as changemakers. You'll also commit to setting a personal fundraising goal and meaningful gift amount — there are no minimums, just heartfelt intentions.

Submit your [Interest Form](#) by August 1, 2025 to be considered (space is limited to 15–20 members). Let's harvest aloha together on August 9!



## A Hui Hou, Interns and Board Members!



**Zachary Britz**  
Summer Intern

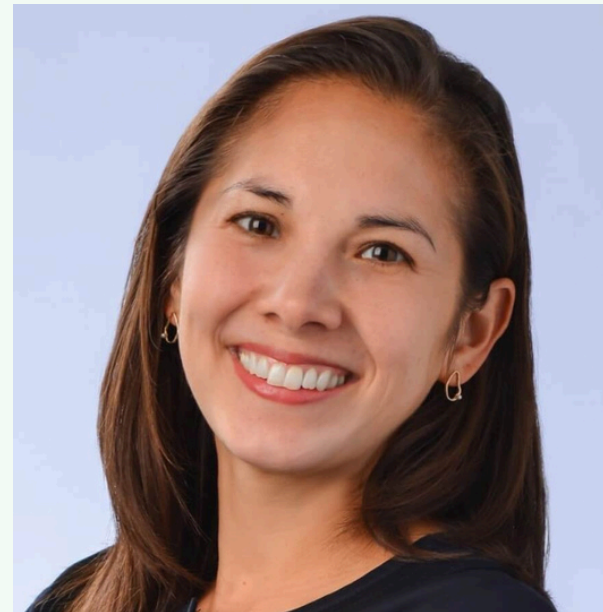
As a senior majoring in Public Health at the University of Hawai'i at Mānoa, Zachary brought great energy and a fresh perspective to his work. During his seven weeks with us, he explored the landscape of food waste in Hawai'i and how it can be redirected to support food security. We're so thankful for his time, assistance, and commitment to creating a healthier, more equitable food system.



**Ayanna Norman**  
Summer Intern

Ayanna spent three weeks of her summer with Aloha Harvest. As a student majoring in Allied Health Studies and Psychology, she brought thoughtfulness and curiosity to her work, exploring how food recovery supports local communities and serves as a vital public health intervention. Her contributions have been deeply appreciated, and we wish her the very best in all that's ahead!

## Mahalo for your continuous support in our mission to Waste Less, Feed More.



**Nicole Altman**  
Director

We are sincerely thankful to Nicole for her thoughtful and forward-thinking contributions to our Board of Directors since 2017. In her roles as Vice Chair and Director, Nicole consistently brought sharp insight, collaborative energy, and a deep belief in our mission. Her work as Senior Counsel at Instacart enriched our board conversations with a strategic outlook, and her presence will be truly missed.



**Gaison Ontai**  
Vice Chair

We extend our deepest appreciation to Gaison for his service on our Board of Directors since 2019. His leadership as Past Chair, Vice Chair, and Secretary reflected a strong sense of purpose to our mission. He brought clarity and professionalism to every discussion, drawing on his expertise as Corporate Counsel at Queen's Health Systems to help steer our organization through key decisions and growth.



**Summer H. Kaiawe, Esq.**  
Secretary

With heartfelt gratitude, we thank Summer for her remarkable commitment to Aloha Harvest over the past nine years. Since joining the Board in 2015, she has played an essential role as Director and Secretary, consistently offering grounded guidance. Her experience as a partner at Watanabe Ing LLP has strengthened our governance and has helped shape the organization we are today.



## STAY IN TOUCH

✉ [INFO@ALOHAHARVEST.ORG](mailto:INFO@ALOHAHARVEST.ORG)

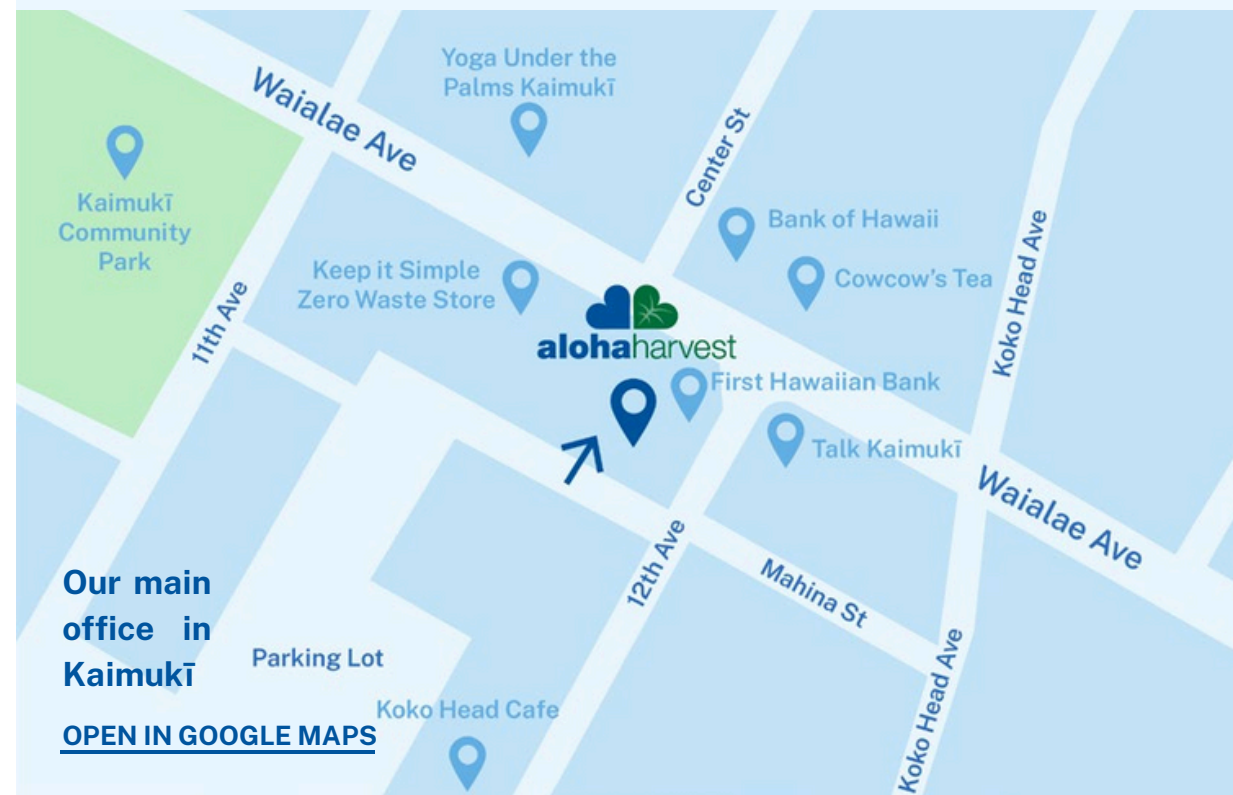
📞 808-537-6945

📍 3599 WAIALAE AVE., STE 23  
HONOLULU, HI 96816

✉ [SUBSCRIBE TO OUR EMAIL NEWSLETTER](#)



Donate directly online and automatically receive a tax-deductible donation receipt.



# Mahalo for reading!



Rescuing Quality Food to Nourish  
and Strengthen Our Community