

2022 Q1 (JAN – MAR)

Rescue & Distribution Overview

Total amount
distributed from
January – March
2022:



685,715 lbs.

Pounds Distributed by Category

Total Amount Rescued: 684,761 lbs.

Total Amount Donated: 200 lbs.

Total Amount Purchased: 754 lbs.

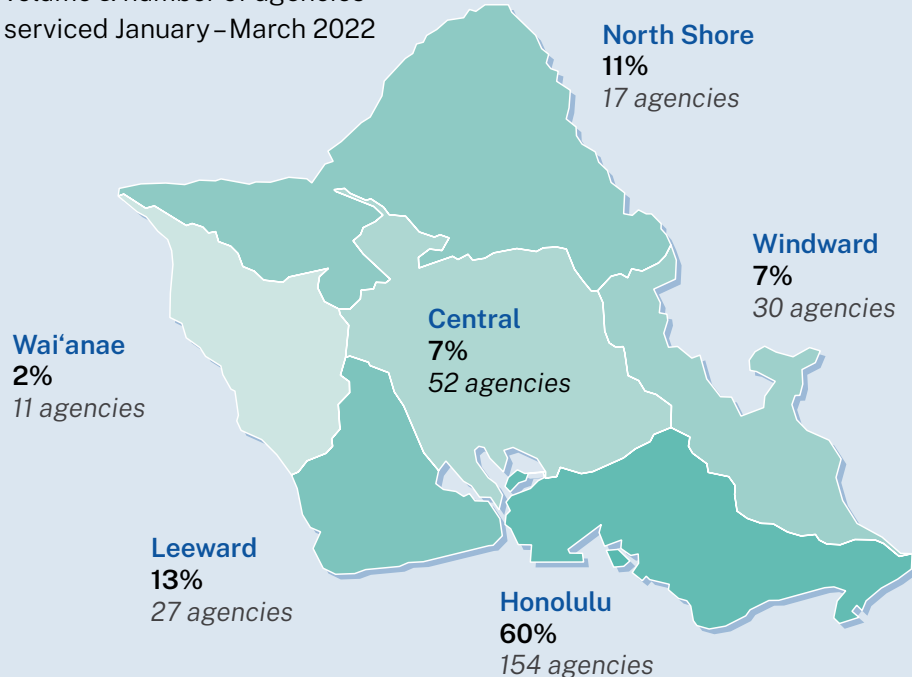
Rescued refers to food that would otherwise go to waste.

Donated refers to food that the donor could have potentially sold for profit and wouldn't necessarily go to waste.

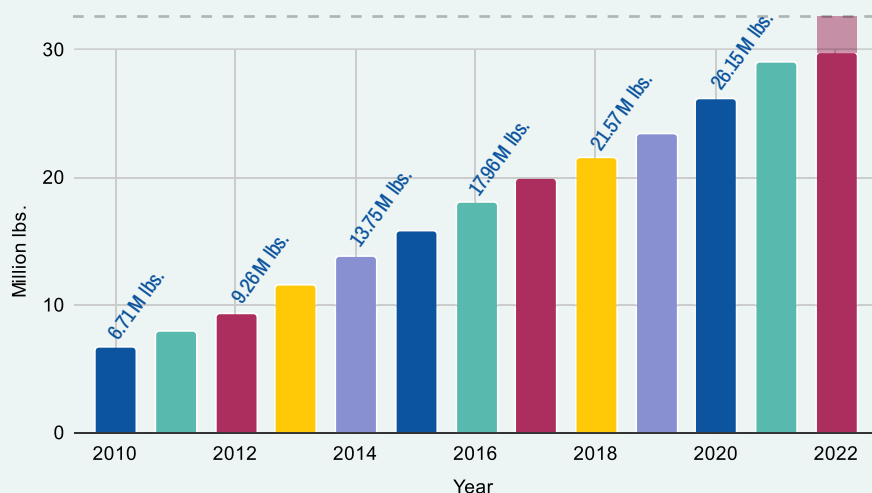
Purchased food from this quarter includes food purchased from various Windward farms as an extension of our Community Harvest program.

Distribution Across O'ahu by Region

% of total food distributed by
volume & number of agencies
served January – March 2022



Total Pounds Rescued to Date (Since 1999)



We are only 299,727 lbs.
away from reaching

30 million lbs.

rescued since
beginning in 1999!

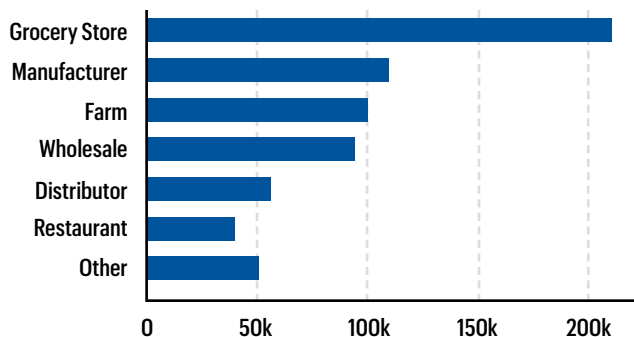


Over the last 4 years,
we have averaged
2.2 million lbs.
rescued each year.

Breakdown by Category

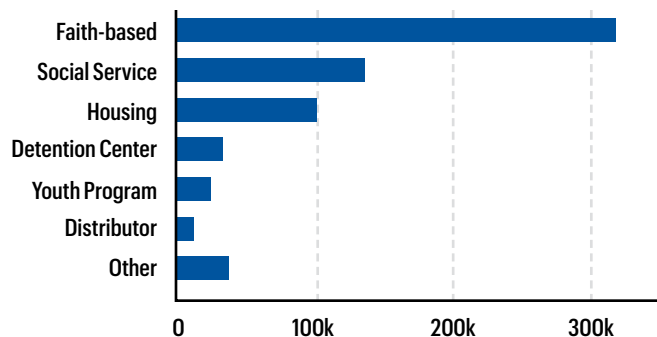
Rescued food came from
204 food donors

25%
are
new!



Food from all sources went to
87 recipient agencies

6%
are
new!



Mahalo to all the individuals who donated food! Individual donations in Q1 totaled 2,655 lbs.!

Top 5 Food Donors

Rescued food only

1. Foodland
2. Y. Hata & Co., Ltd.
3. Villa Rose Egg Farm
4. Meadow Gold Dairies Hawaii
5. Hawaiian Isles Water Company



Photo: Meadow Gold is a long-time partner who donates on average, 2-3 times weekly. Donations are primarily milk and occasionally creamer, yogurt, sour cream, juice, and ice cream.

Top 5 Recipient Agencies

Food from all sources

1. Hawai'i Cedar Church
2. Angel Network Charities
3. Ohana, Family of the Living God
4. Kalihi Valley Homes Association
5. Light of the World Ministries



Photo: Angel Network Charities hold a distribution every Friday that we help to supplement. They are our largest partner in East Honolulu and also a long-time supporter.

Food Donor

Sodexo, The Queen's Medical Center

Starting in September 2021, we have partnered with food service company, Sodexo, at The Queen's Medical Center in Honolulu for ongoing weekly pickups. We are happy to be working with Chef James Shirley who manages the Sodexo kitchen at the hospital.

"What stood out to me about Aloha Harvest was the way they consider quality and presentation when distributing their food – they respect and see those who they deliver to as just as deserving as others."

Chef James Shirley, Sodexo



Top left: Our field services coordinator, Tina, and Sodexo's Chef James outside The Queen's Medical Center. **Top right:** Sodexo's designated food tray carts are unloaded into our Aloha Harvest truck. **Bottom right:** Sodexo maintains clear signage throughout their kitchen to ensure food safety and quality protocols are maintained.



Food Donor

Hawaiian Isles Water Company

Hawaiian Isles Water Company reached out to us after pallets of their water bottles were rejected or returned by their buyers due to minor factors like loose and incomplete pallets.

They decided to donate all the water and reached out to us, trusting that we would help get that water redistributed quickly to those communities in need.

In our first week, we picked up 32,300 lbs. of water and delivered it to 10 agencies!



Top: Food laid out during our second distribution at Thomas Square. **Bottom:** Founder Kara with our drivers Sini & Hiram.

Recipient Agency The Radical Hale

Radical Hale is a small nonprofit working to provide outreach, health care, medical, and housing navigation services to the houseless.

Founded after the pandemic by Executive Director Kara England, the nonprofit is run solely by Kara and her volunteers without assistance from large government grants or financial donors. Kara reached out to Aloha Harvest hoping to build a steady partnership to provide food for the houseless. We are thrilled to support and expand her outreach, delivering food donations to her distributions twice a month.

Kara pours her heart into the organization's operations and reminds us that the houseless are people in our community who need just as much love and care as if they were our own family members.

Team Announcements

The Rockefeller Foundation – Acumen Food Systems Fellowship

We are excited to share that our very own executive director, Phil Acosta, has been chosen as a member of the inaugural cohort of The Rockefeller Foundation – Acumen Food Systems Fellowship!

There were over 1,000 applicants, and Phil will be one of 22 global leaders working on creative solutions for transformative food systems change.

The fellowship is an intensive, one-year leadership development program offered through Acumen Academy, the world's school for social change. The inaugural Food Systems Fellowship will

introduce moral leadership concepts to a globally diverse cohort of food systems leaders who are creating more inclusive, nourishing, and regenerative food systems.

Fellows will participate in a blend of immersive seminars, workshops, and self-directed leadership experiments. The program will combine in-person and virtual learning over the course of the Fellowship year. After Year 1 of the Fellowship, Food Systems Fellows will join Acumen's global community of social innovators, called The Foundry, who are working together to build a world without poverty and injustice.



Congratulations, Phil!

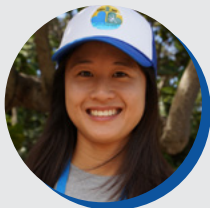


Supported by



[Learn more about the fellowship here.](#)

New Team Members



Danielle Lee

Communications Lead (Contract)

With a background as a brand strategist and graphic designer, she has been helping us manage all things communication with additional internal strategy support. Passionate about sustainable food systems, she's ecstatic to be helping our mission.



Deissery Ann Medeiros

Business Operations Intern

With a background in paralegal and sales work, Deissery has been helping us with grants & donor management, office operations, and our Emergency Preparedness & Disaster Response protocols. She has a passion for self-sustainability & environmental resilience.



Mitieli Takitaki

Driver Helper

With a background in the masonry industry, he is excited to be part of the team and be able to give back to those in need. He is currently rotating through our delivery routes and will transition to a full-time Driver position soon.

2022 Q1 (JAN – MAR)

Volunteer Activity



583
Total
Hours



80
Active
Volunteers



4,583
Total Lbs.
Rescued

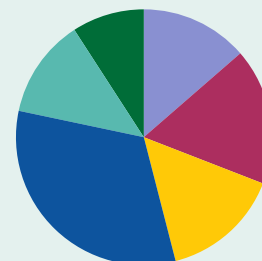
We are eternally grateful to all our volunteers!

First-time volunteers increased

↑18%

Volunteers who have helped 5+ times increased

↑31%



% Pounds Rescued by Volunteer Program

- 14% KCC Farmers' Market
- 17% Kaka'ako Farmers' Market
- 15% Blaisdell Farmers' Market
- 32% Mililani Farmers' Market
- 13% Community Harvest
- 9% On-call Food Rescue



Sign up or learn more about our volunteer opportunities on our volunteer portal at alohaharvest.org/volunteer



AFF is providing support with our capacity building efforts to develop the workforce that will support our future Food Resilience Hub, expanding organizational capacity to work with more partners and serve more people.



AUW is providing multiyear support through their Safety Net program, allowing us to continue to provide critical food assistance to our keiki, kupuna, individuals, and families who are resource-constrained.



COOKE FOUNDATION, LTD.

Support from the Cooke Foundation will allow us to expand our Meals with Aloha program, which feeds families through a unique aggregation of rescued food and purchased ingredients in collaboration with established community partners to prepare/package meals, create value-add products, and assist with outreach and distribution.



HAWAI'I COMMUNITY FOUNDATION

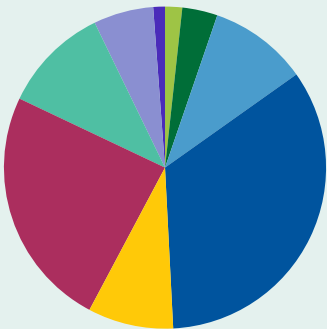
Ongoing financial support from the Aranoff Keiki Fund and Kipuka Fund, through HCF, allows us to scale the impact of our mission to rescue quality food to nourish and strengthen the community. The Foundation is also providing support for our Emergency Planning and Disaster Preparedness efforts.



Mahalo to all the individuals, organizations, businesses, and workplace giving programs for your monetary donations! Individual monetary donations donated in Q1 totaled \$39,977.

Funding Sources by Percent

- 24% HMLF
- 3.5% Corporations
- 6% Organizations
- 1% Fundraising
- 2% Aloha United Way
- 11% Individuals
- 10% Foundations
- 34% Grants-Private
- 8.5% Government –City



Mahalo for reading!

Contact Us

✉ info@alohaharvest.org

☎ (808) 537-6945

📍 3599 Waiālae Avenue, #23,
Honolulu, HI 96816

Donate 

[Subscribe to our newsletter](#)